

K42L

TRUCK-MOUNTED CONCRETE BOOM PUMP

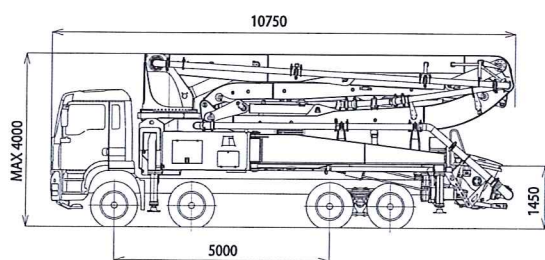
Placing boom
Pumping unit

B5RZ 42/38
HP1808ECX
HP1608EC
HP1606H
PTO
4 axles

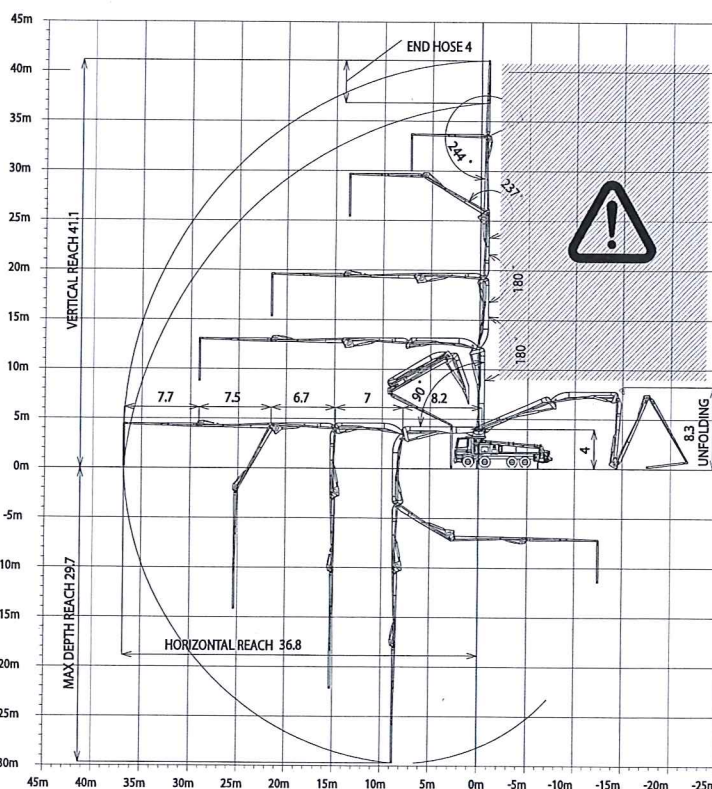
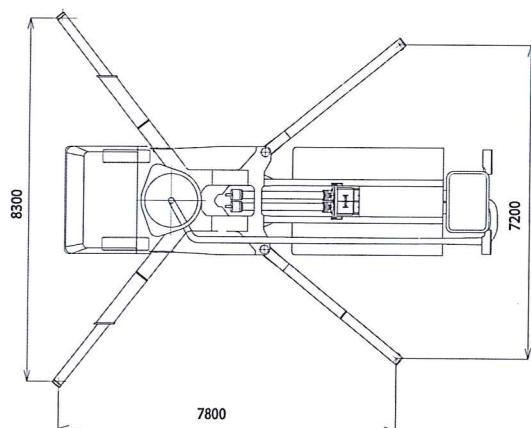
Driven by
Chassis



Dimensions



Dimensions varying according to truck assembly



K42L

Standard equipment

- Assembling on standard 4 axles chassis
 - Self-supporting frame, torsion free, FEM designed and fatigue tested at the test bench TEC CIFA
 - Articulated boom, FEM designed and and fatigue tested at the test bench TEC CIFA
 - Placing boom B5RZ 42/37, 5 sections, "RZ" folding system
 - Fully hydraulic outrigger controls on both sides of the truck
 - Front "X" style diagonal outriggers with double telescopic opening and swing-out rear outriggers for a quick and easy set-up also in narrow areas
 - "Load Sensing" proportional boom control for pumping unit HP-C
 - "BFC" Best-Flex Cifa supporting system allowing just one man to change delivery pipeline easily, quickly and safe
 - Concrete flow rate regulator
 - Safety device on opening inspection hatch
 - Pumping unit with closed loop (HP1608EC) or open loop (HP1606H)
 - Project conforms to Directive Machinery 2006/42/CE
 - 2 Proportional radio control with two boom movement speed, synthesizer for automatic frequency search, 8 position joy stick and concrete flow rate regulator, 20 mt cable
 - Double thickness concrete pipes, in high resistant steel and insert carbide chrome - CIFA Long Life Pipes
 - Emergency control pad for pumping unit HP-C
 - Remote controlled electric vibrator placed on the concrete hopper grid
 - Centralized lubrication system for pumping unit
 - Automatic oil lubrication system for pumping pistons on HP-C
 - Additional manual lubrication system for pumping unit
 - Hard plastic outrigger support plates with relative housing
 - Rear light on hopper
 - Level readers for stabilization control
 - Accessories for cleaning and pipes washing
 - Fiber glass hopper covering
 - Emergency pumping unit kit
- (for machine with closed loop pumping unit)

Control system

- Smartronic Silver (available only for machine with closed loop pumping unit):
 - integrated color LCD
 - counters
 - pumping unit management
 - diagnostics
 - capsense rear panel

Main options

- ASC - Advanced Stability Control
(available only for machine with closed loop pumping unit)
- LSC - Light Stability Control
(available only for machine with open loop pumping unit)
- Pneumatic concrete valve - Shut-off valve
- High pressure water pump 28l / 120 bar
- Centralized lubrication system for placing boom
- Separated emergency engine kit for independent control of the concrete pumping unit, boom and water pump

TRUCK-MOUNTED CONCRETE BOOM PUMP

Placing boom	B5RZ 42/38
Pumping unit	HP1808ECX HP1608EC HP1606H
Driven by	PTO
Chassis	4 axles

Pumping unit technical data

Model		HP1808ECX	HP1608EC	HP1606H
Max. theoretical output	m ³ /h	180	160	160
Max. pressure on concrete	bar	83	80	53
Max. numbers of cycles per min.	nr.	27	31	30
Conc. cylinders (diam. x stroke)	mm	260x2100	230x2100	230x2100
Concrete hopper capacity	l	600	550	550
Hydraulic circuit		closed	closed	open

Placing boom technical data

Model		B5RZ 42/37
Pipeline diameter	mm	125
Max. vertical reach	m	41,1
Max. horizontal distance (from center of slewing axis)	m	36,8
Min. unfolding height	m	8,8
Section numbers		5
1st section opening angle		90°
2nd section opening angle		180°
3rd section opening angle		180°
4th section opening angle		237°
5th section opening angle		244°
Rotating angle		370°
End hose lenght	m	4

Technical data and characteristics subject to modifications without notice

